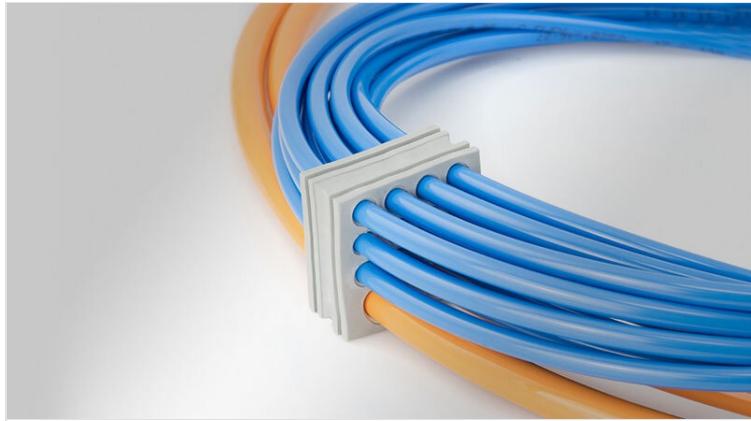


# KT-DT | Multi-membrane cable grommets

for cable diameters 1 - 14.5 mm / IP54 / UL Type 12

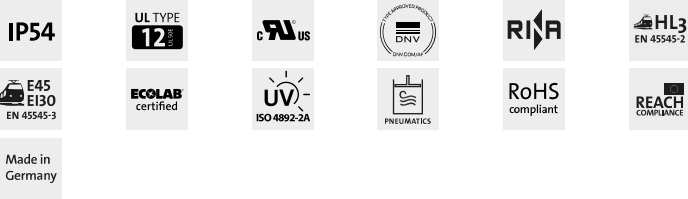


The KT-DT cable grommets can be used anywhere where a large number of electrical, pneumatic or hydraulic lines must be routed and sealed with IP54. By using the KT-DT grommets, the cable density can be significantly increased.

KT-DT grommets are compatible with split icotek cable entry frames, such as [KEL-U](#), [KEL](#) and [KEL-FG](#). The routing of cables with and without preassembled connectors in one cable entry frame can thus be easily combined.

The KT-DT grommets are also perfectly suitable for the assembly of subsequently terminated cable harnesses.

[ST-B Plugs](#) can be used for sealing pierced membranes if cables have been removed.



## Specifications

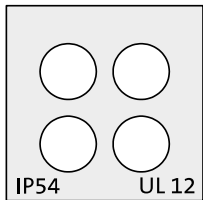
<b>IP rating (EN 60529)</b>	IP54
<b>UL Type (UL 50E)</b>	UL Type 12
<b>Material</b>	Elastomer
<b>Flame class</b>	UL94-V0, self-extinguishing
<b>Operating temperature</b>	-40 C° to 100 C°
<b>Properties</b>	silicone free, halogen free

## Advantages & Benefits

- Enable routing of pre-terminated cables through cable entry frames and split cable glands
- High cable density
- Enables sub-assembly of cable harnesses

## Product types & Sizes

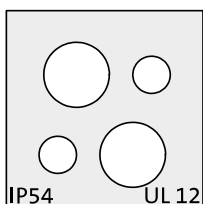
### KT-DT 7



Part No.	<b>41550</b>
EAN	<b>4251269319204</b>
Package quantity	<b>10</b>
For max. no. of cables	<b>4</b>
Color	<b>gray (similar RAL 7035)</b>
Length	<b>21 mm</b>
Width	<b>21 mm</b>

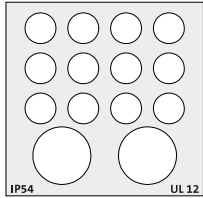
Height	<b>19 mm</b>
Mounting height	<b>2 mm</b>
For cable type	<b>Round cable</b>
Clamping range	<b>4 x 1 - 6 mm</b>

### KT-DT 8



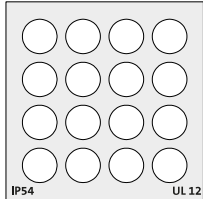
Part No.	<b>41552</b>
EAN	<b>4251269319211</b>
Package quantity	<b>10</b>
For max. no. of cables	<b>4</b>
Color	<b>gray (similar RAL 7035)</b>
Length	<b>21 mm</b>
Width	<b>21 mm</b>

Height	<b>19 mm</b>
Mounting height	<b>2 mm</b>
For cable type	<b>Round cable</b>
Clamping range	<b>2 x 1 - 7 mm</b>
	<b>2 x 1 - 4 mm</b>

**KT-DT 1**

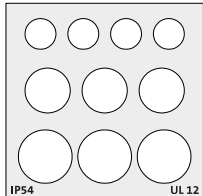
Part No. **41500**  
 EAN **4251269307287**  
 Package quantity **10**  
 For max. no. of cables **14**  
 Color **gray (similar RAL 7035)**  
 Length **41,5 mm**  
 Width **40,5 mm**

Height **19 mm**  
 Mounting height **2 mm**  
 For cable type **Round cable**  
 Clamping range **12 x 1 - 6.5 mm**  
**2 x 1 - 12.2 mm**

**KT-DT 2**

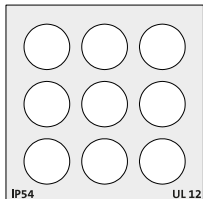
Part No. **41510**  
 EAN **4251269307294**  
 Package quantity **10**  
 For max. no. of cables **16**  
 Color **gray (similar RAL 7035)**  
 Length **41,5 mm**  
 Width **40,5 mm**

Height **19 mm**  
 Mounting height **2 mm**  
 For cable type **Round cable**  
 Clamping range **16 x 1 - 7.1 mm**

**KT-DT 3**

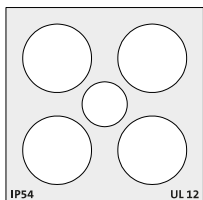
Part No. **41520**  
 EAN **4251269307300**  
 Package quantity **10**  
 For max. no. of cables **10**  
 Color **gray (similar RAL 7035)**  
 Length **41,5 mm**  
 Width **40,5 mm**

Height **19 mm**  
 Mounting height **2 mm**  
 For cable type **Round cable**  
 Clamping range **4 x 1 - 6.5 mm**  
**3 x 1 - 9.5 mm**  
**3 x 0 - 11.3 mm**

**KT-DT 4**

Part No. **41530**  
 EAN **4251269307317**  
 Package quantity **10**  
 For max. no. of cables **9**  
 Color **gray (similar RAL 7035)**  
 Length **41,5 mm**  
 Width **40,5 mm**

Height **19 mm**  
 Mounting height **2 mm**  
 For cable type **Round cable**  
 Clamping range **9 x 1 - 9.5 mm**

**KT-DT 5**

Part No. **41540**  
 EAN **4251269319099**  
 Package quantity **10**  
 For max. no. of cables **5**  
 Color **gray (similar RAL 7035)**  
 Length **41,5 mm**  
 Width **40,5 mm**

Height **19 mm**  
 Mounting height **2 mm**  
 For cable type **Round cable**  
 Clamping range **4 x 1 - 14.5 mm**  
**1 x 1 - 9.5 mm**