

# Afdichtpluggen

voor kabelinvoerframes & kabeldoorvoerplaten



RoHS  
compliant



WE  
CONTROL  
COMPONENTS

[Bestel direct online @ CC Nederland »](#)

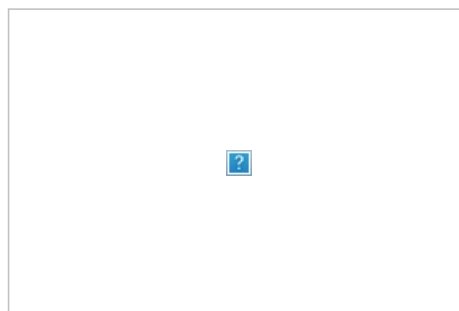


[Voor aanvragen uit België klik hier »](#)

The openings at the fastening points of the cable entry frames can be closed with the cover plugs.

There are two versions: One version to cover the openings when using threaded bushings, one to cover the screws. The cover plugs can be used with the products of the KEL series.

The cover plugs can also be used with the products of the KEL-DPZ series. They are available in black and grey.



When fastening from the rear using a threaded bushing, an opening is created at the front at the fastening points. These can be closed with the **cover plugs A** in black (Order No. 99142).



When fastening from the front by means of screws, the openings at the screw heads can be closed with the **cover plugs B** in black (order no. 99200). The cover plugs can only be used for M5 DIN 912 screws.



When fastening from the front by means of screws, the openings at the screw heads can be closed with the **cover plugs B** in black (order no. 99200) or **cover plugs C** in grey (order no. 99201). The cover plugs can only be used for M5 DIN 912 screws.

## Specificaties

<b>Materiaal</b>	Polyethyleen
<b>Temperatuur</b>	0 C° tot 70 C°
<b>Eigenschappen</b>	hoge chemische bestendigheid

## Voordelen

# Producttypes en maten

---

## Afdichtplug A



Art.nr. **99142**  
EAN  
Aantal **100**  
Hoogte **4 mm**  
Kleur **zwart**  
Geschikt voor: **KEL-ER /  
KEL-U / KEL /  
KEL-QUICK /  
KEL 183 /  
KEL-FL**

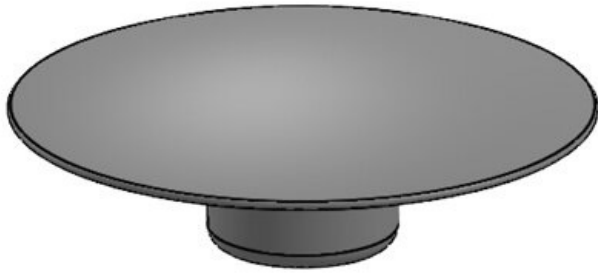
## Afdichtplug B



Art.nr. **99200**  
EAN **4251269324**  
**208**  
Aantal **40**  
Hoogte **3 mm**  
Kleur **zwart**  
Geschikt voor: **KEL-ER /  
KEL-U / KEL /  
KEL-QUICK /  
KEL 183 /  
KEL-FL / KEL-  
DPZ**

---

**Afdichtplug C**



Art.nr. **99201**  
EAN **4251269324**  
**215**  
Aantal **40**  
Hoogte **3 mm**  
Kleur **grijs**  
**(vergelijkbaar RAL 7035)**  
Geschikt voor: **KEL-DPZ**

---

**icotek**<sup>®</sup>  
smart cable management